



Sample Test Questions

Music: Choral





SAMPLE TEST QUESTIONS

The sample test questions in this document are designed to give you an introduction to the nature of the questions included in the Washington Educator Skills Tests—Endorsements (WEST-E). They represent the various types of questions you may expect to see on an actual test in this test field; however, they are *not* designed to provide diagnostic information to help you identify specific areas of individual strength or weakness or to predict your performance on the test as a whole.

Work through the sample questions carefully before referring to the answer key that follows. The answer key provides the correct response for each question and lists the objective within the test framework to which each question is linked. When you are finished with the sample questions, you may wish to review the test objectives and descriptive statements provided in the test framework for this test field.

In addition to reading and answering the sample questions, you should also utilize the following preparation materials available on the WEST Web site:

-  Read **WEST-E Test-Taking Strategies** to understand how test questions are designed to measure specific test objectives and to learn important test-taking strategies for the day of the test.
-  Review the **Test Summary and Framework** for your test field to familiarize yourself with the structure and content of the test. This document contains general testing information as well as the percentage of the total test score derived from each content domain described in the test framework.

Readers should be advised that this document, including many of the excerpts used herein, is protected by federal copyright law.



SAMPLE MULTIPLE-CHOICE QUESTIONS

1. Which of the following scales is demonstrated in this example? (The example will be played twice.)

(The examinee listens to a series of pitches that represent a whole-tone scale.)

- A. minor
- B. whole tone
- C. pentatonic
- D. chromatic

2. Which of the following vocal ensembles performs this excerpt? (The excerpt will be played twice.)

(The examinee listens to a 30-second excerpt from a work performed by an SAB chorus.)

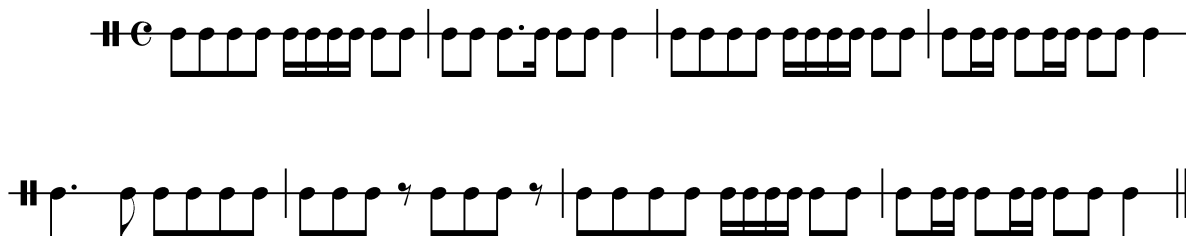
- A. SAB
- B. TTB
- C. SATB
- D. SSA

3. This excerpt was most likely composed during which of the following periods?

(The examinee listens to a 20-second excerpt from the choral section of the Verdi Requiem.)

- A. Renaissance
- B. Baroque
- C. Classical
- D. Romantic

4. Use the score below and listen to the excerpt to answer the question that follows.

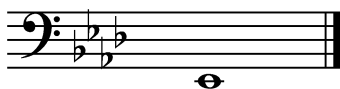


In which of the following measures of this excerpt does the drummer make an error in rhythm? (The excerpt will be played twice.)

(The examinee listens to a recorded performance of the musical score shown above. The drummer plays two pairs of sixteenth notes in measure 2.)

- A. measure 2
- B. measure 4
- C. measure 5
- D. measure 7

5. Use the example below to answer the question that follows.



Which of the following pitches is shown above?

- A. F-sharp
- B. D-sharp
- C. G-sharp
- D. C-sharp

6. Which of the following measures features a minor seventh chord?

A.



B.



C.



D.



7. Use the example below to answer the question that follows.

Moderato



Which of the following time signatures is implied in this example?

- A. $\frac{3}{8}$
- B. $\frac{3}{2}$
- C. $\frac{6}{8}$
- D. $\frac{6}{4}$



8. Which of the following statements best characterizes verse-chorus form?
- A. Verse-chorus form uses one instrumental solo.
 - B. Songs in verse-chorus form are strophic.
 - C. Verse-chorus form is nonrepetitive and nonsectional.
 - D. Songs in verse-chorus form start with the bridge.
9. Which of the following symphonies was the first to incorporate a chorus and solo voices in a large, orchestral work?
- A. Franz Schubert's no. 8 in B Minor
 - B. Wolfgang Amadeus Mozart's no. 40 in G Major
 - C. Johannes Brahms's no. 4 in E Minor
 - D. Ludwig van Beethoven's no. 9 in D Minor
10. Which of the following U.S. musical genres from the 1960s and 1970s combines rhythm and blues and gospel?
- A. soul
 - B. punk
 - C. disco
 - D. ska
11. A drone is most characteristic of traditional music from which of the following countries?
- A. Brazil
 - B. South Africa
 - C. Jamaica
 - D. India

12. Use the example below to answer the question that follows.

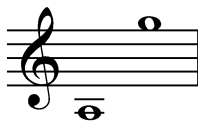


Which of the following compositional devices has been applied to measures 1 and 2 to produce measures 3 and 4?

- A. retrograde
 - B. augmentation
 - C. sequence
 - D. inversion
13. In which of the following groups do the instruments typically display the greatest dynamic range?
- A. percussion
 - B. brass
 - C. woodwinds
 - D. strings



14. Use the example below to answer the question that follows.



The range shown above is most characteristic of which of the following voice types?

- A. soprano
- B. mezzo-soprano
- C. contralto
- D. tenor

15. Which of the following words from a song begins with a consonant that is percussive and unpitched?

- A. lining
- B. judge
- C. keeping
- D. voice

16. Use the example below to answer the question that follows.





18. The use of songs such as "We Shall Overcome" and "Down By the Riverside" during the civil rights movement is an example of employing a specific music genre for the purpose of:
- A. entertaining young people.
 - B. expressing patriotism.
 - C. requesting financial donations.
 - D. promoting social change.
19. Performing in an ensemble most clearly develops which of the following real-world transferable skills?
- A. ability to persist in achieving a shared goal
 - B. ability to lead a group of people
 - C. ability to read and comprehend directions
 - D. ability to write and develop narratives
20. Which of the following professions involves analyzing, adjusting, creating, and re-creating sounds for television programs and motion pictures?
- A. orchestrator
 - B. studio musician
 - C. sound mixer
 - D. copyist



ANSWER KEY

Question Number	Correct Response	Test Objective
1	B	0001
2	A	0002
3	D	0003
4	A	0004
5	B	0005
6	D	0006
7	C	0007
8	B	0008
9	D	0009
10	A	0010
11	D	0011
12	C	0012
13	A	0013
14	B	0014
15	C	0015
16	B	0016
17	A	0017
18	D	0018
19	A	0019
20	C	0020